

ALLOWABLE WIND PRESSURES (PSF)					
ZONE		TRIBUTARY AREA			
		10 SF	50 SF	100 SF	
ROOF	INTERIOR	1	21w1	20w0	19w0
	EDGE	2	21w1	20w0	19w0
	EDGE / CORNER	3	21w1	20w0	19w0
OVERHANG	INTERIOR	3	25w22	25w20	19w18
	CORNER	3	25w22	25w15	19w10
	INTERIOR	4	31w4	30w20	32w7
WALL	CORNER	5	31w4	32w1	32w1

EXHIBIT D - STRUCTURAL DRAWING

C:\Users\jvanderk\Documents\Drawings\426-Well House\426-Well House.dwg, 2/21/2025, 3:16:14 PM

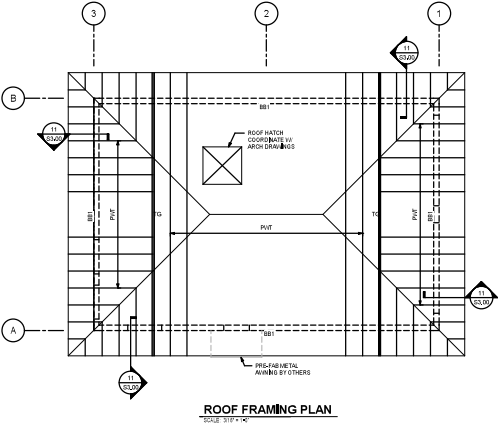
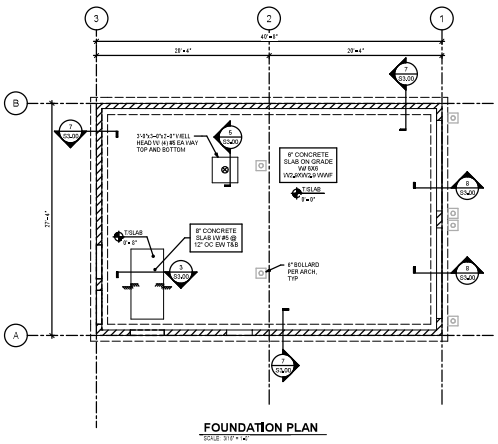
2/21/2025, 3:16:14 PM

FOUNDATION PLAN NOTES:
1. REFER TO ARCHITECTURAL DRAWINGS FOR VAPOR BARRIER REQUIREMENTS, SLOPES, STEPS, AND DRAIN LOCATIONS IN FLOOR SLABS.
2. REFER TO GEOTECHNICAL RECOMMENDATIONS FOR SUBGRADE COMPACTION AND DRAINAGE REQUIREMENTS.
3. DO NOT SCALE DRAWING. VERIFY COORDINATE ALL DIMENSIONS AND ELEVATIONS WITH ARCHITECTURAL DRAWINGS BEFORE COMMENCING CONSTRUCTION. NOTIFY THE STRUCTURAL ENGINEER AND ARCHITECT OF RECORD OF ANY DISCREPANCIES BEFORE PROCEEDING WITH CONSTRUCTION.
4. VERIFY COORDINATE THE LOCATION OF ALL UNDERGROUND UTILITIES WITH THE FOUNDATION.
5. VERIFY COORDINATE EDGE OF SLAB DETAILS AT EXTERIOR DOORS. SEE HEIGHTS AND DETAILS OF WALL OPENINGS WITH ARCHITECTURAL DRAWINGS.
6. INDICATES FOOTING TYPE. REFER TO FOOTING SCHEDULE ON THIS SHEET. 6-4" INDICATES TOP OF FOOTING ELEVATION -1'-4" UNLESS NOTED OTHERWISE.
7. INDICATES 8" CHAIN WALLS WITH VERTICALS AT 32" OC MAX. AND AT CORNERS, INTERSECTIONS AND BOTH SIDES OF OPENINGS, UNLESS NOTED OTHERWISE.

WALL FOUNDATION SCHEDULE				
MARK	WIDTH	THICKNESS	REINFORCEMENT	COMMENTS
6-4"	8" x 8"	8" x 8"	10 #4 LONG BOT	

ROOF FRAMING PLAN NOTES:
1. REFER TO ARCHITECTURAL DRAWINGS FOR ROOF SLOPES AND ACCESS HATCH LOCATIONS.
2. COORDINATE LOCATION OF MECHANICAL EQUIPMENT AND OPENINGS NOT SHOWN ON PLAN.
3. INDICATES CONCRETE BEAM TYPE. REFER TO CONCRETE BEAM SCHEDULE ON THIS SHEET.
4. 12" x 16" INDICATES TOP OF BEAM ELEVATION 1'-6" UNLESS NOTED OTHERWISE.
5. 12" x 16" INDICATES PRE-ENGINEERED VOIDED ROOF TRUSSES @ 24" OC. PROVIDE 8" x 16" TRUSSES WITH 16 #16 DIAPHRAGM WALLS AT 4" OC AT PANEL EDGES AND 4" OC AT TRUSS END SUPPORTS, UNLESS NOTED OTHERWISE.
6. 10" INDICATES PRE-ENGINEERED VOIDED TRUSS BEAMS.

CONCRETE BEAM SCHEDULE						
MARK	WIDTH	DEPTH	REINFORCEMENT			COMMENTS
			TOP	MID	BOT	
10-16"	12" x 16"	12" x 16"	10 #4		10 #4	10 COURTESY MASONRY BOND BEAM





BSSW
ARCHITECTS, INC.
1205 Indian Shores, Suite 200
Fort Myers, FL 33905
Phone: 239-735-0880 Fax: 239-735-0254

Project:
City of Naples - Well House 426
Randall Blvd.
Naples, FL 34102

Client:
City of Naples
380 Riverside Cir.
Naples, FL 34102

Consultant:

Engineering & Construction
11000 S. US Highway 1, Suite 100
Naples, FL 34109

Scale:


Revision:
REVISION 1
March 21, 2025

Project: 2124-01
Project Name: 04/18/2025
Drawn By: 04/18/2025

Scale: 1/8" = 1'-0"
Sheet Title: STRUCTURAL PLANS

Copyright © 2025, BSSW Architects, Inc. All rights reserved. No part of this drawing may be reproduced or transmitted in any form or by any means electronic or mechanical, including photocopying and recording, or by any information storage or retrieval system, without prior written permission from BSSW Architects, Inc.

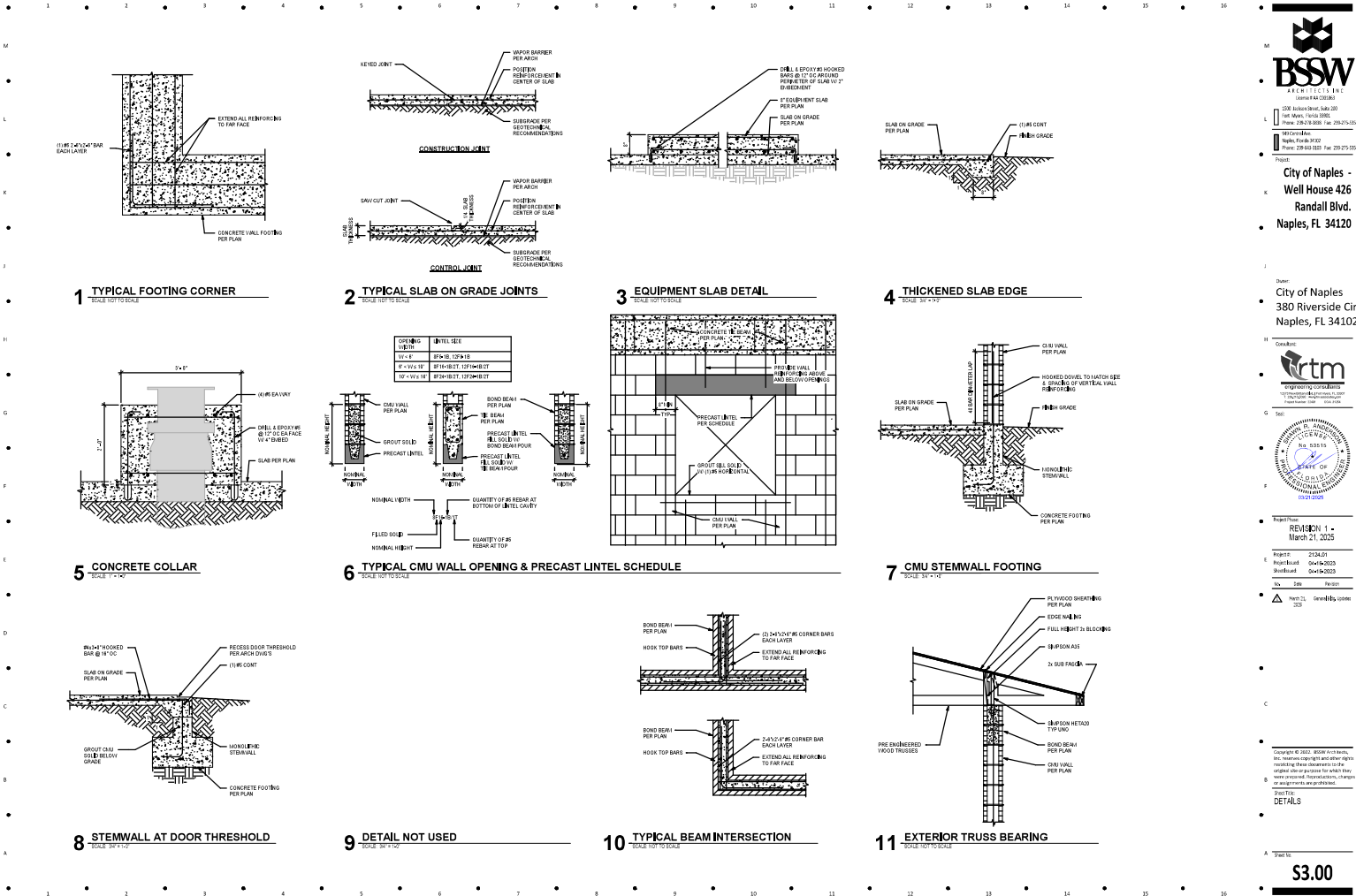
Sheet Title: STRUCTURAL PLANS

Sheet No. **\$2.00**

EXHIBIT D - STRUCTURAL DRAWING

C:\Users\jordan\Documents\Drawings\426 Well House\426 Well House.dwg 2/21/2025 3:36:11 PM

2/21/2025 3:36:11 PM



BSSW
ARCHITECTS, INC.
12000 S.W. 10th Ave., Suite 100
Miami, FL 33155
Phone: (305) 555-1000 Fax: (305) 555-1001
www.bssw.com

City of Naples - Well House 426
Randall Blvd.
Naples, FL 34120

City of Naples - 380 Riverside Cir.
Naples, FL 34102

rtm
Engineering & Construction
10000 S.W. 10th Ave., Suite 100
Miami, FL 33155
Phone: (305) 555-1000 Fax: (305) 555-1001
www.rtm.com

REVISION 1
March 21, 2025

Project: 2124-01
Drawn by: J. Jordan
Checked by: J. Jordan
Date: 04/14/2025

DETAILS

\$3.00